



# Eufaula Lake, Oklahoma

U.S. ARMY CORPS OF ENGINEERS

BUILDING STRONG®

FACT SHEET as of February 6, 2012

**AUTHORIZATION:** Lake Eufaula was authorized by the 1946 River and Harbor Act.

**TYPE OF PROJECT:** Flood damage reduction, hydropower, water supply, recreation, environmental stewardship, navigation.

**PROJECT PHASE:** O&M



**CONGRESSIONAL INTEREST:** Senators Coburn and Inhofe, OK; Representative **Boren**, OK-2.

**NON-FEDERAL SPONSOR:** N/A

**BACKGROUND:** Eufaula Lake is situated on the Canadian River at river mile 27, approximately 12 miles east of Eufaula, Oklahoma. The dam is a rolled earth structure 3200 feet long. The spillway is a concrete, gravity ogee weir with eleven 40x32 foot tainter gates. The three hydropower generators at the project produce approximately \$8,000,000 annually in revenue from power sold to local electric cooperative. The lake has more that 2,400,000 recreation visits each year.

**STATUS:** FY 2011 activities included routine scheduled operations and maintenance activities at the project. Major maintenance contracts awarded at the project in FY 2011 included removal of asbestos at the powerhouse, rehab of the penstock, installation of tainter gate wire ropes, and award of the draft EIS contract to support updating the project master plan and shoreline management plan.

**ISSUES:** Section 3133 of WRDA 2007 established the formulation of a Eufaula Lake Advisory Committee to provide information and recommendations to the Corps of Engineers regarding the operations of Eufaula Lake for the various project purposes. A draft charter for the committee has been developed and is being staffed with the Secretary of the Army for approval. A second issue of note involves increasing public demand at the project to open new areas of the lake to private limited development, including the use of authorities granted under the Oklahoma Lakes Demonstration Program (Sec. 3134 of WRDA 2007) to accommodate these requests. As a result of these increased requests the District has determined that an update to the project master plan and associated shoreline management plan is warranted. In association with these updates, an Environmental Impact Statement (EIS) is being prepared and is scheduled for completion in late FY 2013. Eufaula Lake requires additional funds to initiate a water reallocation study legislated as part of the Section 3133 WRDA 2007 bill.

**FINANCIAL SUMMARY (\$):**

	<u>O&amp;M</u>
Federal Cost Estimate	N/A
Non-Federal Cost Estimate	N/A
Total Project Cost	N/A
Allocation thru FY 2010	N/A
ARRA Funding	\$7,140,000
Allocation for FY 2011	\$7,232,000
Allocation for FY 2012	\$5,930,000
President Budget FY 2013	\$5,494,000
Amount That Could Be Used for FY 2013	\$6,494,000
Balance to Complete	N/A

**SCHEDULE:**

**FY 2012 Scheduled Work:** The current FY 2012 budget is being used for routine operations and maintenance activities at this project. In addition, a portion of the budget will be utilized to continue data collection associated with doing a supplement to the Environmental Impact Statement (EIS) to support an update to the project master plan and shoreline management plan.

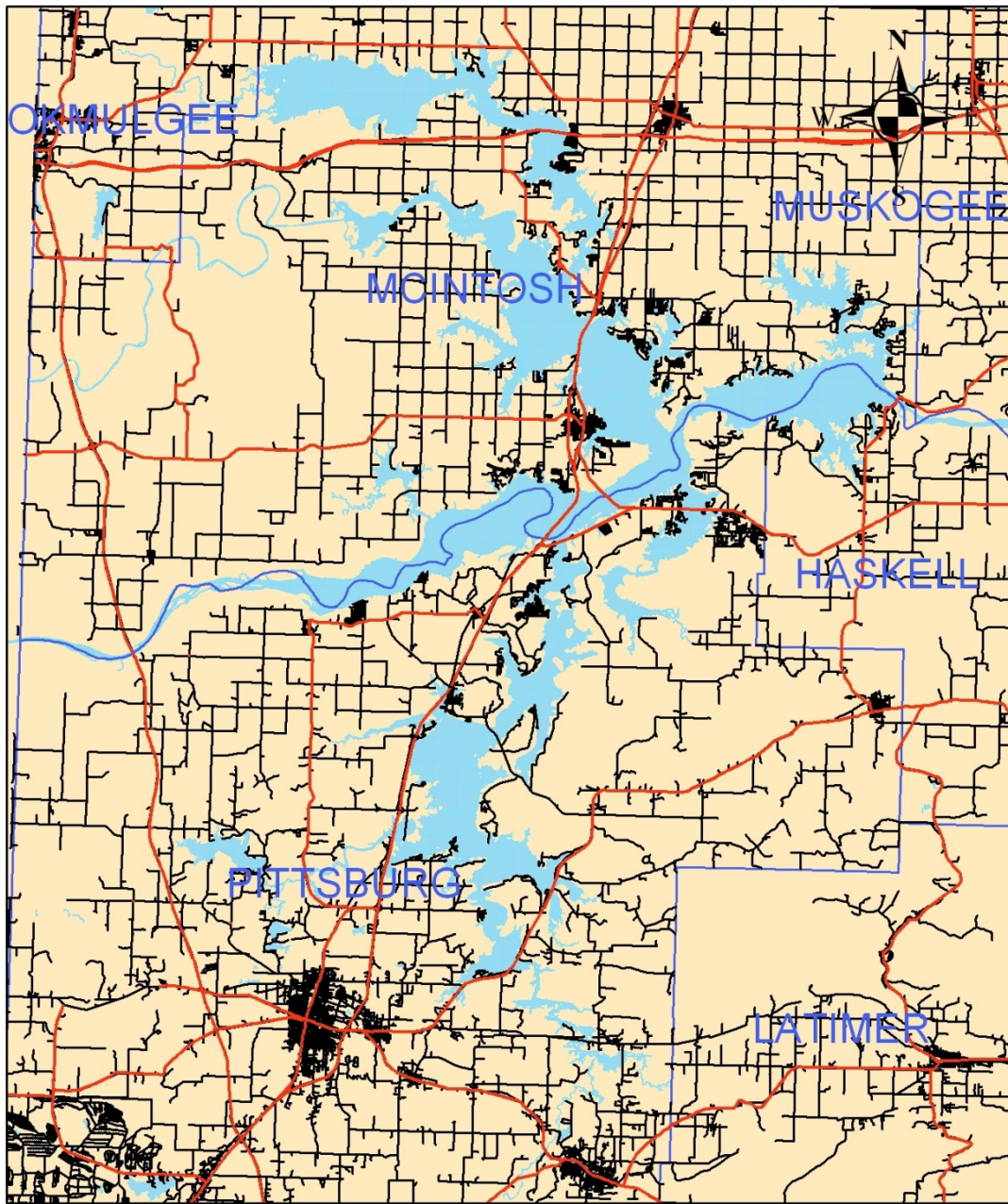
**FY 2013 Budget:** The FY 2013 President's budget will be used for routine operations and maintenance activities at the project. A total of \$500,000 of the budget will be used to finalize the work on the EIS to support the update to the project master plan and shoreline management plan.

**COMPLETION:** N/A. Operating project.

**For more information** regarding the Eufaula Lake Project, contact Jeff Knack, Lake Manager, at (918) 484-5135 or Jeff.Knack@usace.army.mil.

**U.S. ARMY CORPS OF ENGINEERS – TULSA DISTRICT**  
**www.swt.usace.army.mil**

# USACE Tulsa District Eufaula Lake, Oklahoma



0 2 4 8 Miles

### Legend

- Highways
- Roads
- County Borundaries
- Eufaula Lake



US Army Corps  
of Engineers

This image is an approximate representation and may not be used as a legal document due to errors in the generation process. The Corps of Engineers is not responsible for any incorrect information provided in this map.

[www.swt.usace.army.mil](http://www.swt.usace.army.mil)